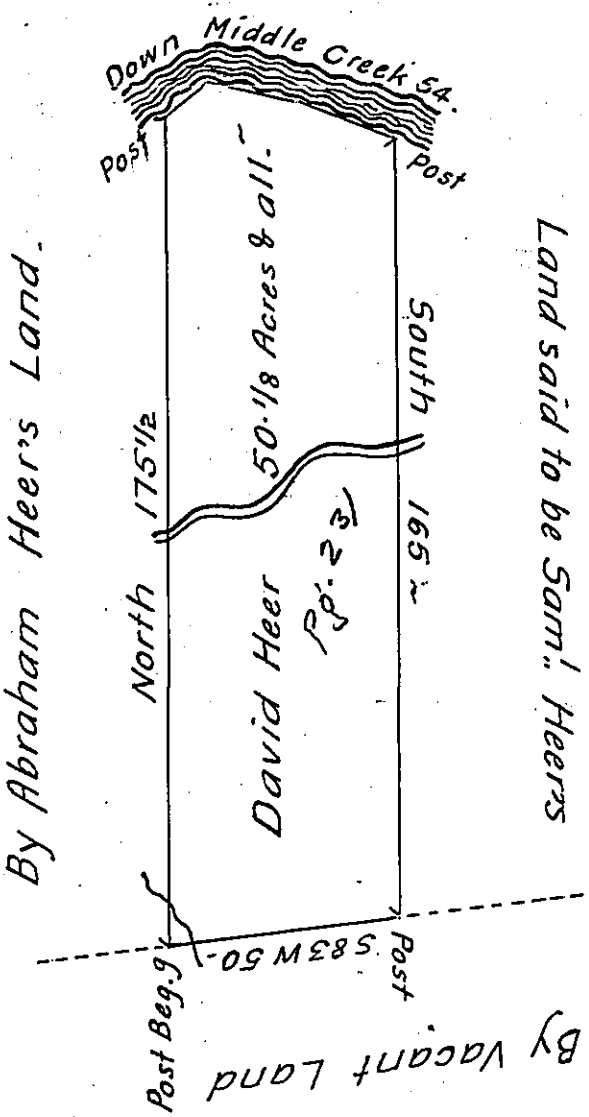


Courses & Distances
Down Middle Creek:
N 53 E 12 ~
S 78 E 20 ~
S 69 E 22 ~
54 ~



The Draught of a Tract of Land called _____ situate on Middle Creek (formerly called Penn's Creek) in Penn's Township Northumberland County containing Fifty Acres 20 Perches with the usual Allowance proportionate to Six acres $\frac{1}{2}$ Cent. for Roads Survey'd the 29th day of October Anno Dom: 1772 In Pursuance of a Warrant from the Honble Proprietaries to David Heer Bearing Date at Philad^a the 10th day of February Anno Dom: 1755 ~

To John Lukens Esq^r. S.G. } $\frac{1}{2}$ W^m Maclay D.S.
of Pennsylvania ~ }

No 29 Cumb^d Coy

IN TESTIMONY that the above is a copy of the original remaining on file in the Department of Internal Affairs of Pennsylvania, made conformably to an Act of Assembly approved the 16th day of February, 1833, I have hereunto set my Hand and caused the Seal of said Department to be affixed at Harrisburg, this thirteenth day of March 1905

George B. ...
Secretary of Internal Affairs.